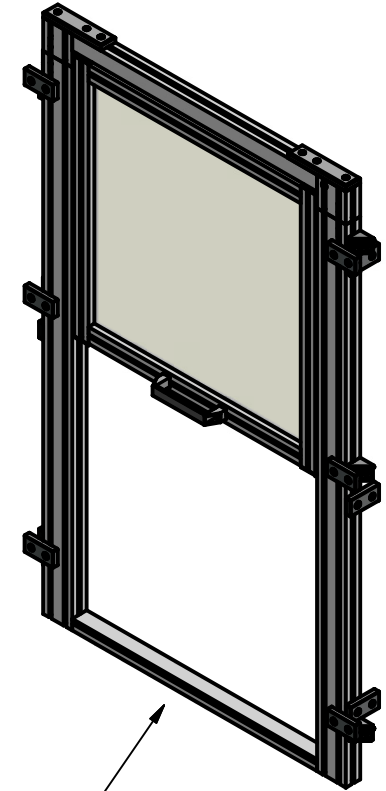
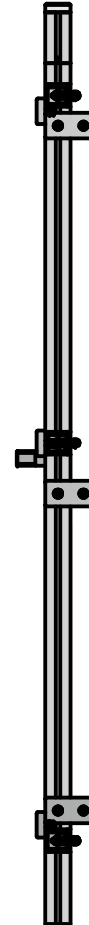
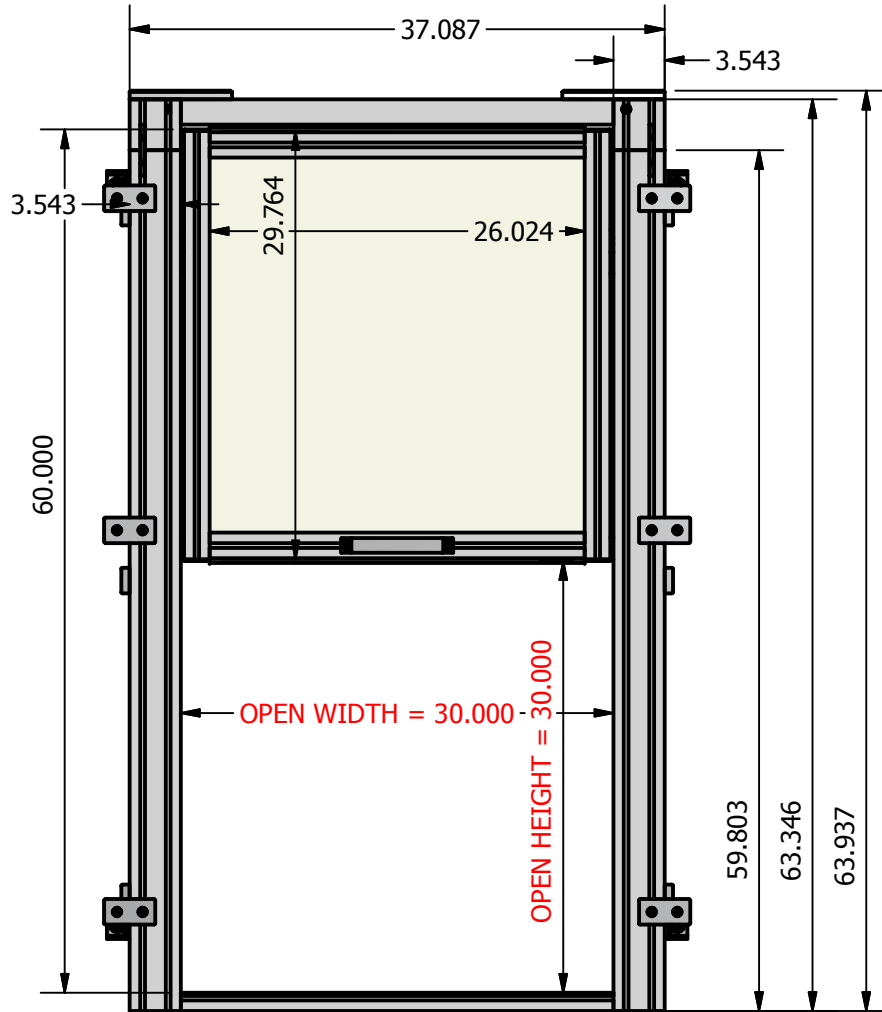



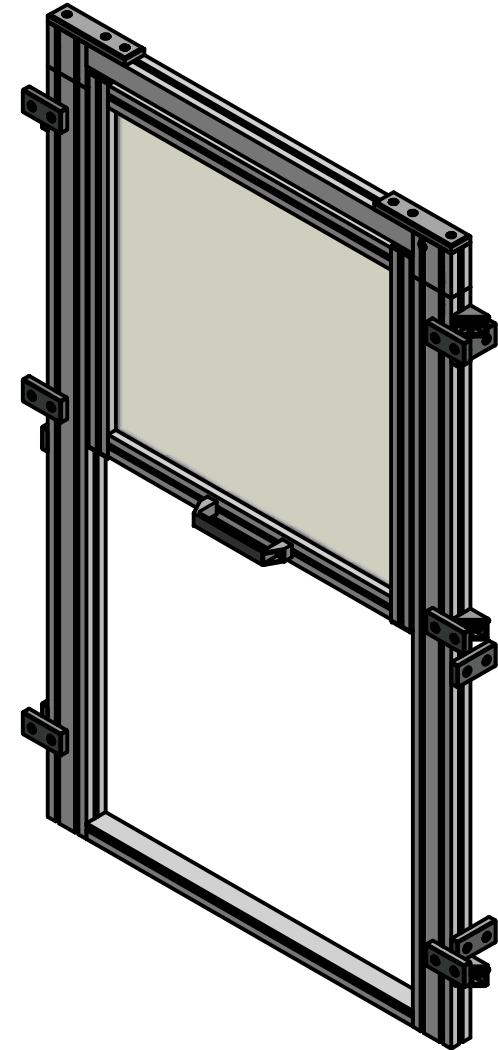
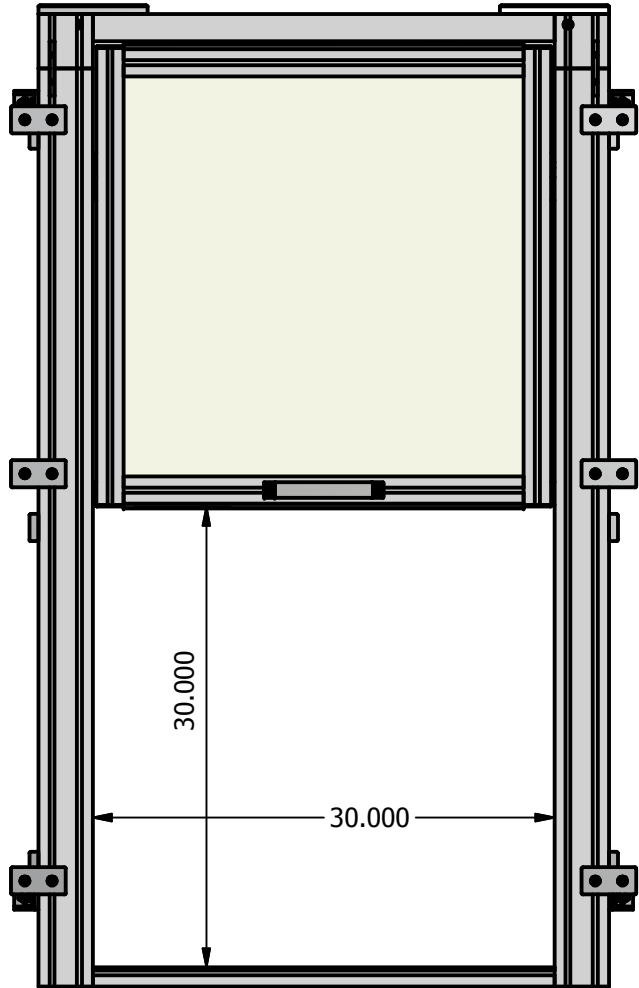
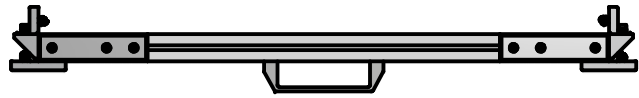
THIS DESIGN IS FOR A
30" X 30" DOOR



CLEAR .220" THICK
POLYCARBONATE
DOOR PANEL
OR SPECIFY

DRAWING APPROVED FOR PRODUCTION BY: _____ DATE _____ APPROVED REVISE & RESUBMIT
 _____ APPROVED WITH CHANGES REJECTED

PROJECT SP120115		 THE ART OF SIMPLICITY	WWW.MINITECFRAMING.COM	
DRAWN BY ANDY MOLES			VICTOR, NY	
DATE 12/2/2015			PH # 585 924-4690	
DRAWN FOR MINITEC'S CUSTOMER		DIRECT 585 398-1240 EXT 104		REV
TOLERANCES UNLESS OTHERWISE NOTED X +/- .1/32" XX +/- .015" XXX +/- .010"		DWG NO SP120115 MAIN ASSY		
MATERIAL		FINISH		SHEET 1 OF 8

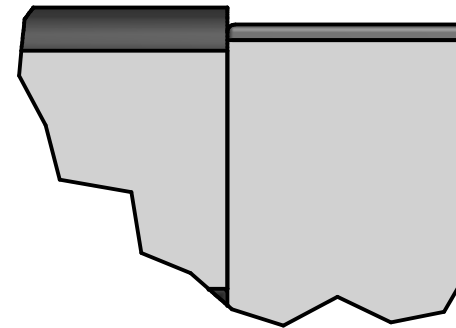
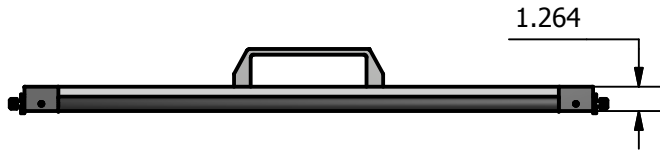


APPROVAL INITIALS:

PRE-MILL INSPECTION
 PROFILE ___ MITER ANGLE ___
 LENGTH ___ MITER DIR. ___

PROJECT SP120115			<small>WWW.MINITECFRAMING.COM VICTOR, NY PH # 585 924-4690 DIRECT 585 398-1240 EXT 104 FX # 585 924-4821 amoles@minitecframing.com</small>	
DRAWN BY ANDY MOLES			REV	
DATE 12/2/2015			DWG NO SP120115 MAIN ASSY	
DRAWN FOR MINITEC'S CUSTOMER		TITLE ADD TITLE		MATERIAL
<small>TOLERANCES UNLESS OTHERWISE NOTED X +/- 1/32" XX +/- .015" XXX +/- .010"</small>		FINISH		SHEET 2 OF 8

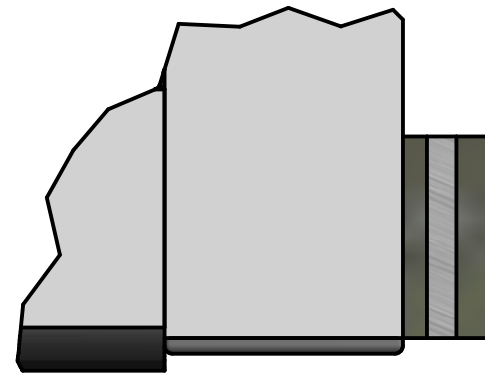
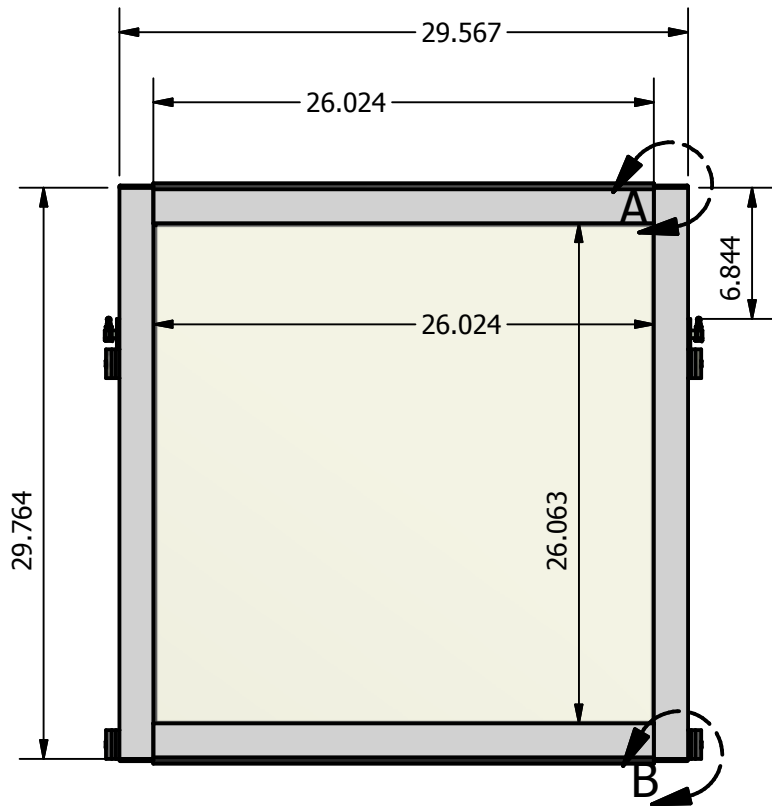
DETAIL A
SCALE .7



DOOR WEIGHT = N/A
NOTE IF YOU RESIZE DOOR
YOU WILL NEED TO UPDATE MASS
IN I PROPERTIES


COUNTERWEIGHT LENGTH(IN) = DOOR WEIGHT(LBS)/2/.56

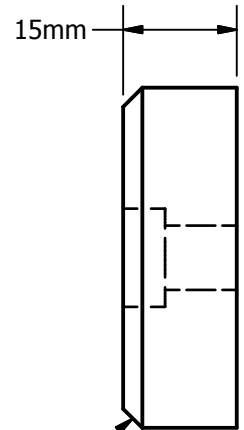
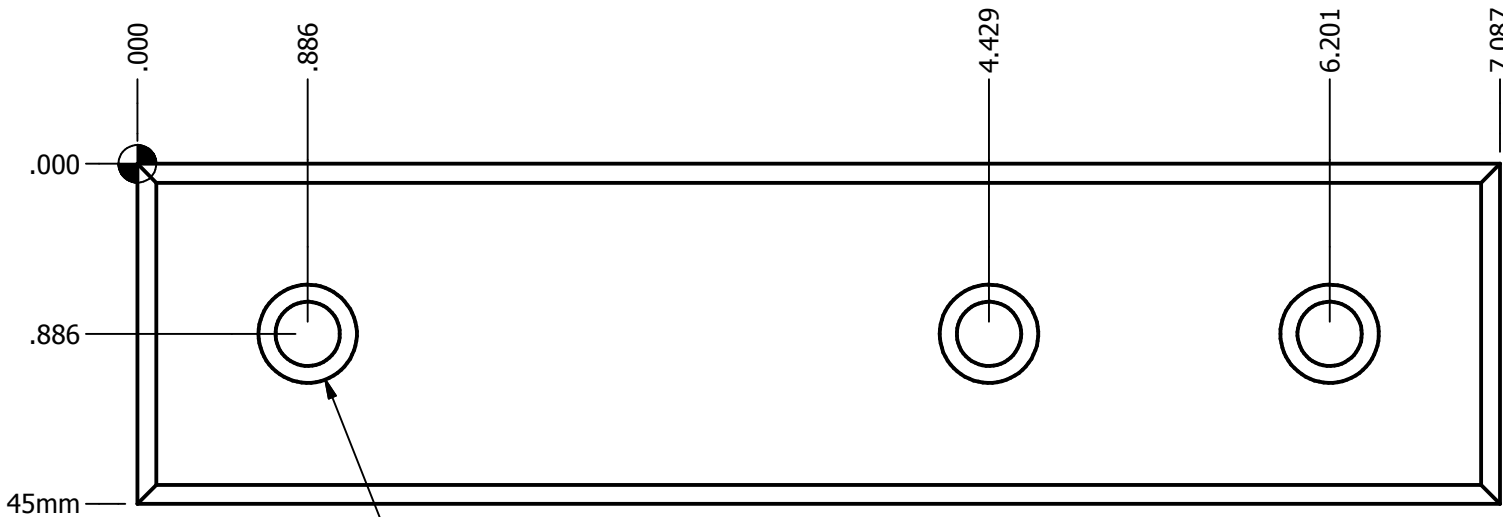
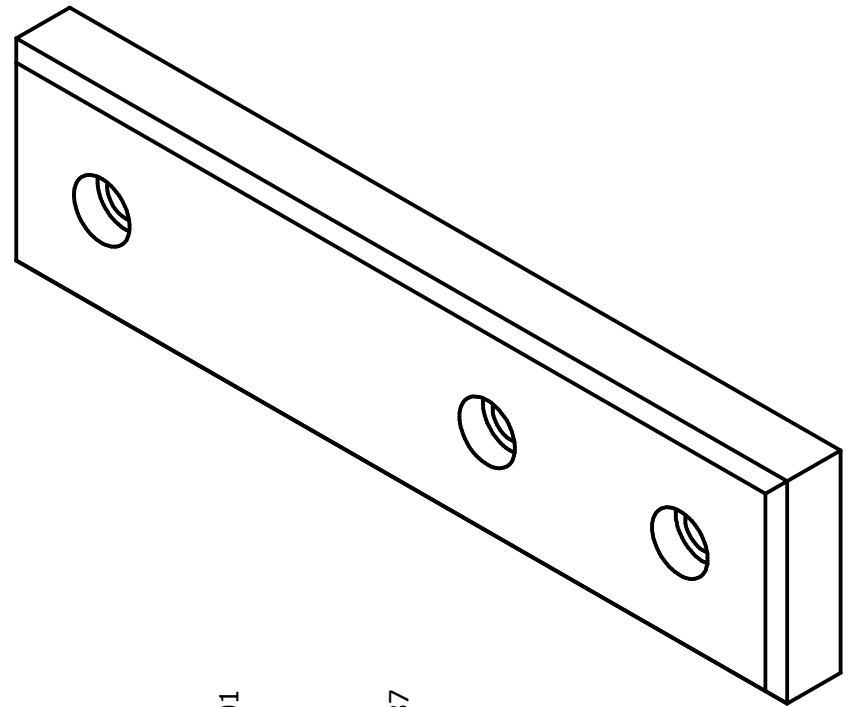
DETAIL B
SCALE .7



APPROVAL INITIALS:

PRE-MILL INSPECTION
PROFILE ___ MITER ANGLE ___
LENGTH ___ MITER DIR. ___

PROJECT SP120115		 THE ART OF SIMPLICITY	WWW.MINITECFRAMING.COM	
DRAWN BY ANDY MOLES			VICTOR, NY	
DATE 12/2/2015			PH # 585 924-4690 DIRECT 585 398-1240 EXT 104 FX # 585 924-4821 amoles@minitecframing.com	
DRAWN FOR MINITEC'S CUSTOMER	TITLE ADD TITLE	DWG NO SP12012015 DOOR ASSY	REV	
TOLERANCES UNLESS OTHERWISE NOTED X +/- .1/32" XX +/- .015" XXX +/- .010"		MATERIAL		SHEET 3 OF 8
		FINISH		



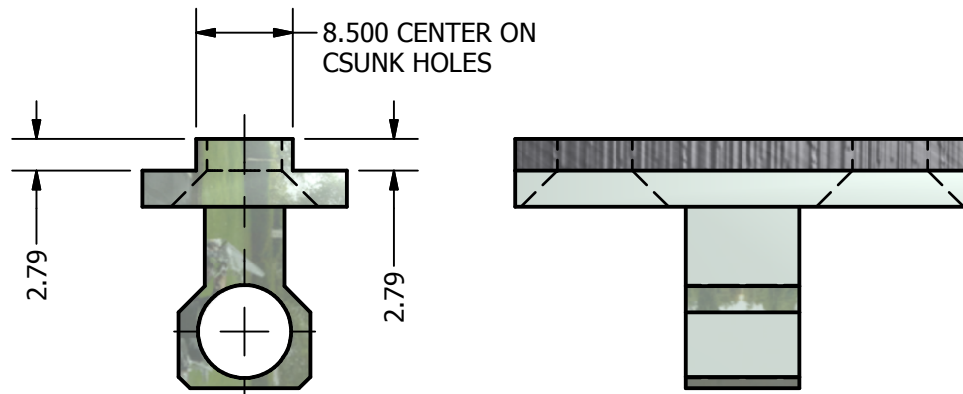
Ø13mm C'BORE 5.5mm DP
Ø8.5mm THRU (4 PLCS)

.098 X 45° Chamfer

APPROVAL INITIALS:

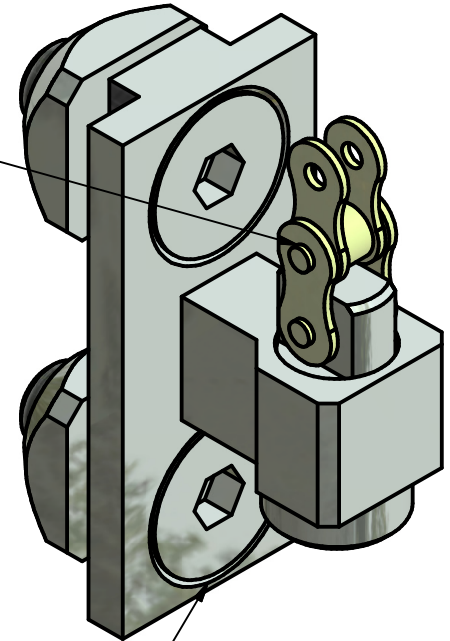
PRE-MILL INSPECTION
PROFILE ___ MITER ANGLE ___
LENGTH ___ MITER DIR. ___

PROJECT SP120115			<small>WWW.MINITECFRAMING.COM VICTOR, NY PH # 585 924-4690 DIRECT 585 398-1240 EXT 104 FX # 585 924-4821 amoles@minitecframing.com</small>	
DRAWN BY ANDY MOLES				
DATE 12/2/2015				
DRAWN FOR MINITEC'S CUSTOMER	TITLE ADD TITLE	DWG NO SP120115-1-1	REV	
TOLERANCES <small>UNLESS OTHERWISE NOTED X +/- .1/32" XX +/- .015" XXX +/- .010"</small>		MATERIAL 20.0013 AL BARSTOCK 15mm X 45mm		
FINISH		SHEET 4 OF 8		



21.1712/9

CHAIN SHOWN FOR REFERENCE ONLY (NOT INCLUDED)



REPLACE M6X20 C'SUNK SCREWS WITH M6X16

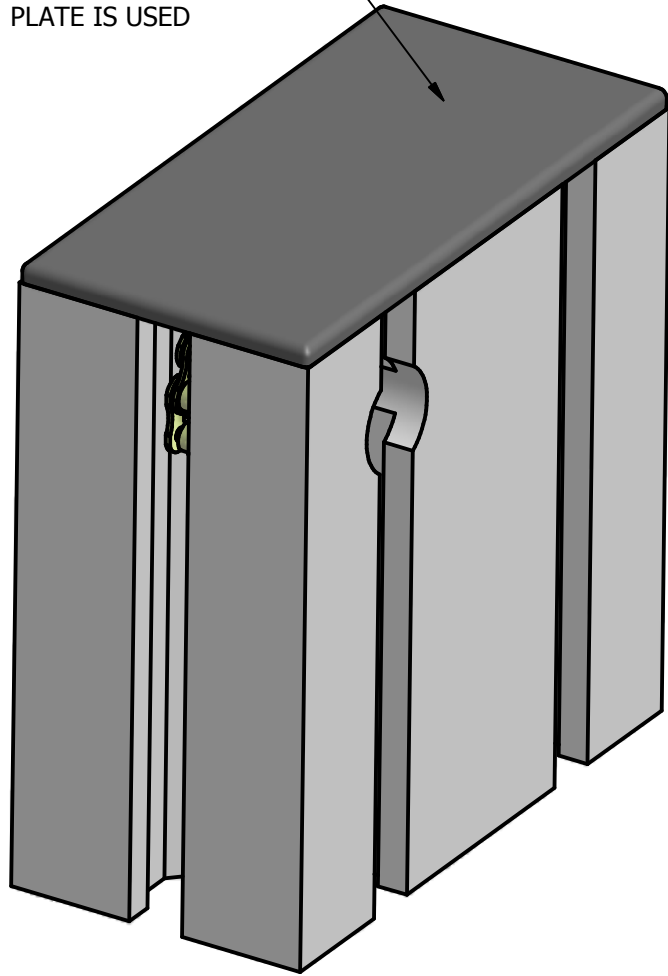
PARTS LIST QTY 1

ITEM	TYPE	PART #	MAT. PRT#	DESCRIPTION	QTY	PULLED	SHRT
1	S	21.1712		MACHINE TO 21.1712/9	1		
2	S	21.1506		M6x16 C'SUNK	2		

PACKAGING INSTRUCTIONS		BAG INDIVIDUALLY			
CUTS	TAPS	PANEL CUTS	MACHINING 7 min	ASSEMBLY	
QUALITY CONTROL					
PAPERWORK					
NOTES: 21.1712 COMES WITH M6X20 COUNTERSUNK SCREWS. THESE NEED TO BE REPLACED WITH M6X16 COUNTERSUNK SCREWS					


PROJECT SP120115			<small>WWW.MINITECFRAMING.COM VICTOR, NY PH # 585 924-4690 DIRECT 585 398-1240 EXT 104 FX # 585 924-4821 amoles@minitecframing.com</small>		
DRAWN BY ANDY MOLES					
DATE 12/2/2015					
DRAWN FOR MINITEC'S CUSTOMER		TITLE ADD TITLE		DWG NO 21.1712/9	REV
TOLERANCES UNLESS OTHERWISE NOTED X +/- .1/32" XX +/- .015" XXX +/- .010"		MATERIAL 21.1712 DOOR CHAIN CLAMP			
FINISH					SHEET 5 OF 8

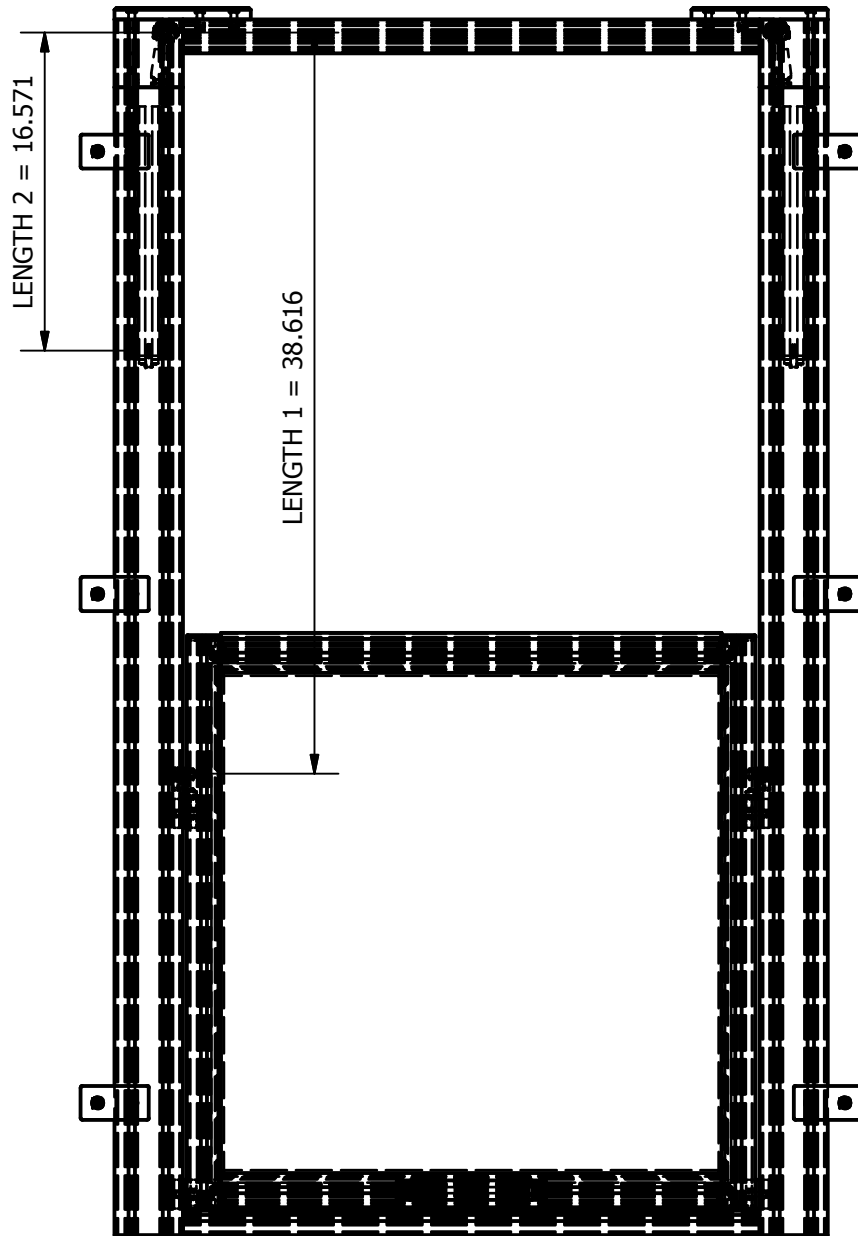
REMOVE CAP & TAP
THIS HOLE IF TOP
PLATE IS USED



DRAWING APPROVED FOR PRODUCTION BY: _____ DATE _____ APPROVED REVISE & RESUBMIT

APPROVED WITH CHANGES REJECTED

PROJECT SP120115			WWW.MINITECFRAMING.COM	
DRAWN BY ANDY MOLES			VICTOR, NY	
DATE 12/2/2015			PH # 585 924-4690 DIRECT 585 398-1240 EXT 104 FX # 585 924-4821 amoles@minitecframing.com	
DRAWN FOR MINITEC'S CUSTOMER	TITLE ADD TITLE	DWG NO 21.1774	REV	
TOLERANCES UNLESS OTHERWISE NOTED X +/- .1/32" XX +/- .015" XXX +/- .010"		MATERIAL		SHEET 6 OF 8
		FINISH		




$$\text{CHAIN LENGTH} = L1 + L2 + 2.25''$$

APPROVAL INITIALS:

PRE-MILL INSPECTION

PROFILE ___ MITER ANGLE ___
 LENGTH ___ MITER DIR. ___

PROJECT SP120115		 <small>WWW.MINITECFRAMING.COM VICTOR, NY PH # 585 924-4690 DIRECT 585 398-1240 EXT 104 FX # 585 924-4821 amoles@minitecframing.com</small>	REV
DRAWN BY ANDY MOLES			
DATE 12/2/2015			DWG NO SP120115 MAIN ASSY
DRAWN FOR MINITEC'S CUSTOMER	TITLE ADD TITLE	MATERIAL	
TOLERANCES UNLESS OTHERWISE NOTED X +/- .1/32" XX +/- .015" XXX +/- .010"		FINISH	
			SHEET 8 OF 8